



# Wiener Lokalbahnen Cargo





Gerald Retscher, CEO



Mag. Christian Hann, CEO

## Contact

Wiener Lokalbahnen Cargo GmbH  
Anton Baumgartner Straße 10  
A-1230 Wien

Gerald Retscher

Tel.: +43 664 6238841

E-mail: [gerald.retscher@wlb.at](mailto:gerald.retscher@wlb.at)

Christian Hann

Tel.: +43 664 6238834

E-mail: [christian.hann@wlb.at](mailto:christian.hann@wlb.at)

Fax Nr.: +43 1 90 444 53499

Web: <http://www.wlb-cargo.at>

## ABOUT US

Wiener Lokalbahnen Cargo – a private rail operator with its origin in regional railways – today primarily organizes block train traffic as part of combined transport services throughout Europe. In addition, the range of services increasingly comprises cross-border block train freight transport of conventional train loads.

The company is one of the leading private rail operators in freight rail services in Austria.

### Convenient location in the heart of Europe

Vienna has countless advantages particularly for combined container freight transport.

As an economic hub and centrally located platform in the heart of Europe, Vienna provides excellent access to the high-growth markets of central and eastern Europe backed by high-quality infrastructure. The Vienna region itself is an import and export centre with connections to the large industrial regions in Germany and northern ports.

The Vienna port has particular importance as a logistics and transshipment hub on the Danube. Thanks to its tri-modal design, goods can be loaded in any combination as needed between the road, train and ship.

With its combined container rail customers, Wiener Lokalbahnen Cargo is a leading partner for the Vienna port. The Vienna port offers ideal conditions as a central hub for traffic from western Europe to southeast Europe.

### Successful together – from the North Sea to the Black Sea

Wiener Lokalbahnen Cargo's international block train carriers are integrated in an extensive network with partner rail operators in Austria and abroad. Wiener Lokalbahnen Cargo also has a full licence as an operator of freight traffic on public railways in Austria, Germany and Hungary.

Relations with Turkey and Rostock are new in the network.









## ADVANTAGES FOR YOU

### Far beyond Europe

The Wiener Lokalbahnen Cargo range of services also includes ocean transport: transshipment centres include the Slovenian port of Koper and in Germany, Hamburg and Bremerhaven. Wiener Lokalbahnen Cargo carries out 16 journeys per week including 6 to Bremerhaven and 10 to Hamburg. Seaport hinterland volumes are increasingly important in combined freight, such as with terminals in Budapest, Duisburg, Regensburg and Nuremberg.

### Environmentally friendly transport networks

For many companies, particularly in the combined transport sector, protecting the environment is a major issue. Modern locomotives contribute to offering economical and environmentally friendly transport services. Wiener Lokalbahnen's electric locomotives are state of the art and run on green electricity. This, in combination with the careful selection of low-emission fuels for diesel locomotives, proves the importance of sustainability. Backed by its rail transport services, Wiener Lokalbahnen Cargo saves the environment several tens of thousands of tonnes of CO2 every year.

### Optimum procedures

Safety management, work safety and environment management certifications are crucial for Wiener Lokalbahnen. During annual audits, procedures are checked and assessed for potential improvements. All of these actions and resulting procedures continually contribute to satisfying customer requirements as best as possible.







## RANGE OF SERVICES

In 2012, Wiener Lokalbahnen Cargo arranged approx. 4,600 national and international freight trains with a load volume of more than 3.2 million tonnes.

**KLV (combined load transport) quantity**  
220.000 TEU

### Rolling Stock

20 electric locomotives, 4 diesel locomotives, more than 250 hired container carriers

### Reference customers

Kühne + Nagel, Roland Spedition, Transpetrol, Hödlmayer International, Hupac, Frankstahl, Isovolta

### Know How

- >> Traction services in national and international rail freight transport
- >> Licence for freight traffic on public rail networks in Austria, Germany and Hungary
- >> Transport chains from the North Sea to the Black Sea
- >> Combined traffic and wagon load freight
- >> Block trains and train set traffic
- >> Partner network
- >> Advantageous location thanks to tri-modal container ports in Vienna and Enns

### Service

- >> Organization of optimal logistic chains
- >> Speed, reliability and flexibility
- >> Efficient and customer-oriented tractions
- >> High service quality – close to the customer





fotocredit: Ennshafen



fotocredit: WLC / Schweinester



### Combined traffic

The core business is in combined transport backed by a 75% market share. In 2012, 220,000 TEU were carried. Both tractions and wagon material are organised: the company has 250 hired container carriers.

In block train container freight, Wiener Lokalbahnen Cargo runs on national and international routes several times a week. The focus is currently geared towards Germany and southeast Europe. Routes connect the ports of Vienna and Enns to international freight terminals from the North Sea to the Black Sea.

### Wagon load freight

In wagon load freight, which makes up 25% of Wiener Lokalbahnen Cargo's transport services, different products are included such as cars, chemicals and mineral oil, grain and coal freight. Every year, 80,000 brand-new cars are transported on Wiener Lokalbahnen Cargo routes to/from Belgium, Germany and the Netherlands. These routes are operated several times a week.

### Optimal solutions through close customer proximity

Products and customer requirements are extremely diverse and very specific. A customized solution is only possible if customer wishes and needs are clearly understood and flexibly implemented. A detailed and joint agreement with the customer is therefore crucial for the Wiener Lokalbahnen Cargo range of services, whereby the focus is always on customer needs and wishes.

The objective is an ideally designed customized logistics solution to meet customer requirements. Wiener Lokalbahnen Cargo offers the possibility to transport intermodal load units individually as a block train or in train groups.

### Guides for the future are set

The focus on customer needs, quality, reliability and flexibility underpin the Wiener Lokalbahnen Cargo range of services. A new branch in Germany will expand the services on offer while boosting customer proximity. Similarly, expanding the operating network to Austrian terminals is another step towards being better equipped as a competent partner for freight transport.







**BORUSAN  
LOJİSTİK**



**METRANS**



**TRANSPETROL**

*Member of the VTG Group*

**HÖDLMAYR**  
INTERNATIONAL



**ROLAND**  
SPEDITION

**HUPAC**



A Siemens Vectron locomotive is shown from a front-three-quarter perspective, moving through a freight yard. The locomotive is white with blue accents and the Siemens logo. It is surrounded by large red and green shipping containers. The background is slightly blurred, suggesting motion.

**SIEMENS**

## Vectron – The locomotive that's forging new paths

Creating Corridors.

[www.siemens.com/mobility/vectron](http://www.siemens.com/mobility/vectron)

Answers for infrastructure and cities.

**wascosa**

As Europe's leading freight wagon  
provider, WASCOSA is committed  
to ensuring customer satisfaction  
and is constantly triggering new  
innovations in the special freight  
wagon industry.

WASCOSA AG  
Werftstrasse 4 · 6005 Lucerne · Switzerland

T +41 41 727 67 67 · F +41 41 727 67 77  
info@wascosa.ch · www.wascosa.ch





© WLB/Zinner

## GLOBAL COMPETENCE IN MASS TRANSIT

In the global Center of Competence for Light Rail Vehicles of Bombardier Transportation in Vienna, 700 highly skilled employees develop and build trams and light rail vehicles. The Services division located in Vienna is in charge of modernisation and material supply projects in Austria. Thus the Bombardier site in Vienna makes a valuable contribution to mobility, comfort and safety in public transportation in cities in Europe, North America and Australia.

[www.transportation.bombardier.com](http://www.transportation.bombardier.com)

**BOMBARDIER**  
the evolution of mobility

BOMBARDIER and The Evolution of Mobility are trademarks of Bombardier Inc. or its subsidiaries



Maintenance for locomotives and waggons

**You can focus on  
your core business.**

We take care of your rolling stock.

**ajax**   
**Loktechnik**

[www.ajax-loktechnik.com](http://www.ajax-loktechnik.com)

**Cat engines are particularly well suited in size, power  
and performance for locomotive traction engines.**

The Caterpillar Railway Diesel Engines power hundreds of mainline and switcher locomotives worldwide. Caterpillar deliver the finest, cleanest, most reliable and cost-effective power for any railway application.



[www.zeppelin-cat.at/power\\_systems](http://www.zeppelin-cat.at/power_systems)

**ZEPPELIN** 



# From *Vienna* everywhere!

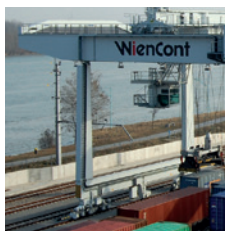
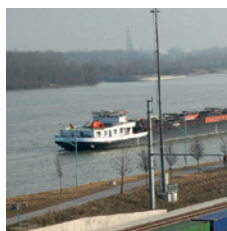


**Wiener Lokalbahnen  
Cargo**

**We put you on track.**

customer-oriented ■  
budget-conscious ■  
dependable ■

[www.wlb-cargo.at](http://www.wlb-cargo.at)



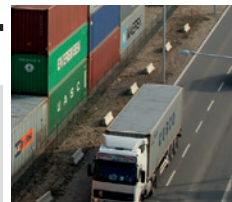
**Trimodal container terminal**  
**We Work For Your Success!**

Handling  
Empty container storage  
Container trading

Container repairs  
Trucking  
Customs clearance

**WienCont**  
Rail ■ River ■ Road

Freudenauer Hafenstraße 12  
1020 Wien  
Phone +43 (0)1 727 72 • 0  
Fax +43 (0)1 727 72 • 26  
[office@wiencont.com](mailto:office@wiencont.com)  
[www.wiencont.com](http://www.wiencont.com)



A company of **wienholding**

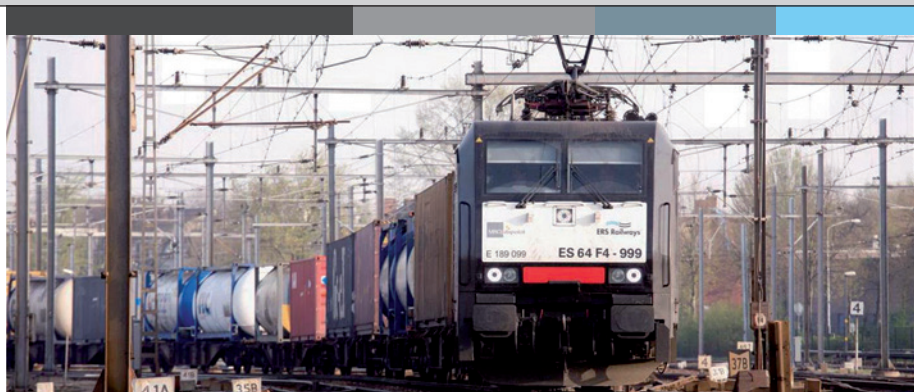
  
**ERS Railways®**

## A leading private railway undertaking

ERS Railways B.V. is one of the leading private railway companies in Europe. Founded as an Intermodal Operator back in 1994 for maritime volumes on rail. ERS Railways meanwhile diversified to a maritime and continental operator/traction provider and delivers throughout Europe railway solutions.

## Sustainability is key to our business - now and in future

ERS Railways runs its long distance trains only based on electric long haul locomotives. In 2010, ERS Railways joined EcoTransIT in order to have access to a trusted source of information about emissions produced respectively saved. ERS Railways is authorized to issue certified



reports on the amount of CO<sub>2</sub> and other emissions saved.

## Reducing noise emissions by 50%? We will achieve it.

On the noise reduction side ERS Railways together with our partners started a project introducing low noise brake systems. „After the

conversion to so called LL – brake blocks the wagons produce 10 decibels less (a halving of the perceived sound by local residents) on 30% of our trains running through the Rhine Valley. We plan to continue such kind of projects and are pro – actively searching for such kind of improvements, says Frank Schuhholz, Managing Director of ERS Railways.

## Where is my cargo?

ERS Railways' wagon sets are equipped with GPS units, therefore it is possible to provide our customers 24/7 tracking information for cargo running on our trains. Regular status updates will be sent automatically to our customers.

## Contact details of our Sales departments

Germany: +49 (0)40 7566 87303  
The Netherlands: +31 (0)10 4942838  
Poland: +48 (0)22 266 8273  
Czech Republic: +420 (72) 295 60 00  
[www.ersrail.com](http://www.ersrail.com)







From

*Vienna*

everywhere!



Wiener Lokalbahnen  
Cargo

We put you on track.

customer-oriented ■  
budget-conscious ■  
dependable ■

[www.wlb-cargo.at](http://www.wlb-cargo.at)