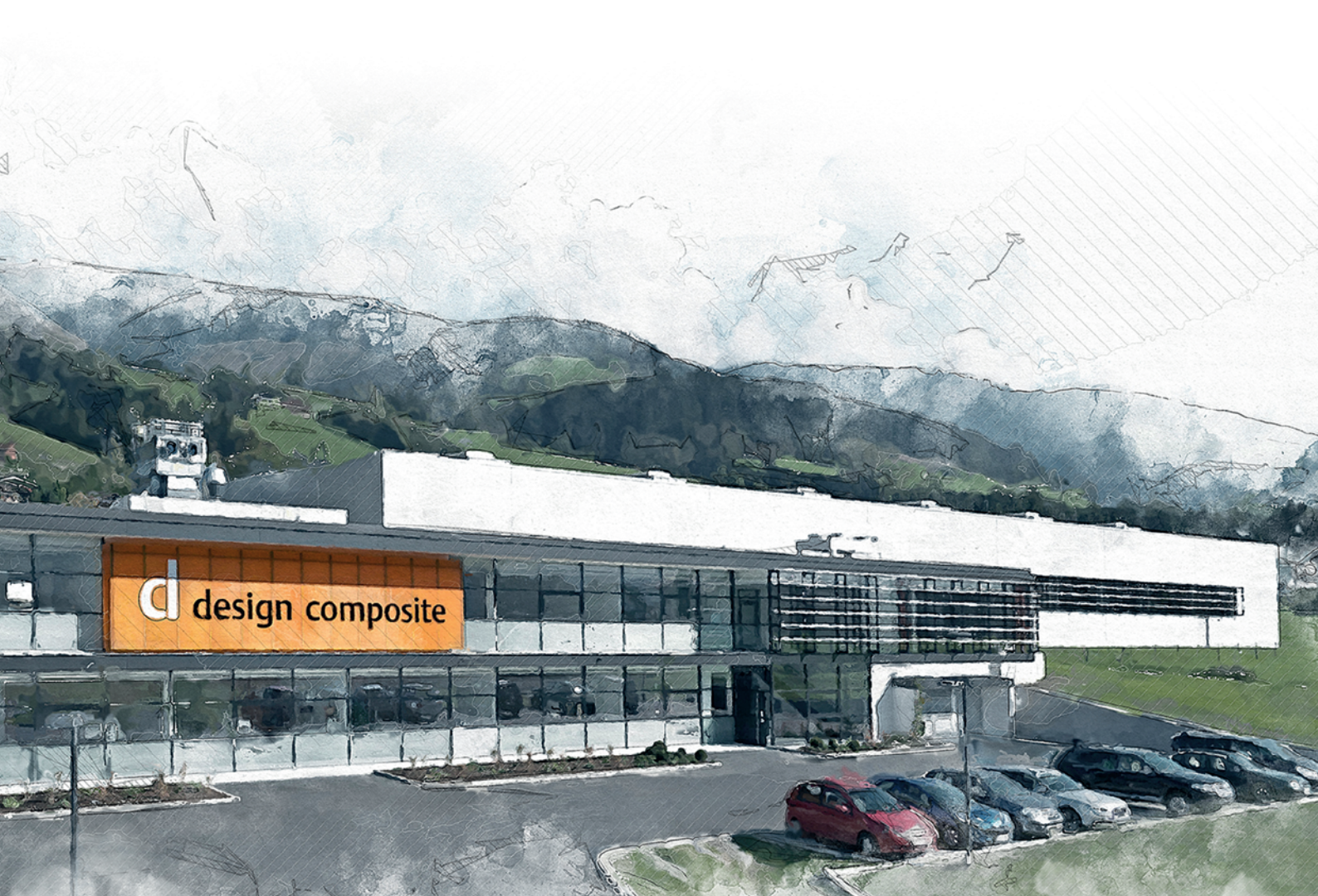




your
design composite



Transportation



Exterior



Interior



Acoustic



www.design-composite.com



Johann Aster, CEO

„We supply lightweight components for the transport, caravan, and construction industries.“

Our mission: Realizing your vision

The motto „We design your composite“ drives us to create individual solutions for sandwich panels. The goal? Using decades of adhesive technology expertise to deliver tailored, unique elements. Our in-house development department advises, plans, and develops production and product solutions perfectly tailored to your requirements.

We are design composite

At our modern Austrian headquarters (3000 m² large production facility), we continuously work on new composite panel solutions. In addition to a broad standard range of lightweight panels, we focus daily on customized customer solutions for our worldwide partners.



Our History:

For a quarter of a century, our company has impressed with groundbreaking advancements. Let's look back at the milestones and glimpse into the future:

- 1999** Start-up by Blizzard Sport
- 2002** Establishment of international distribution network and market launch of architecture and design elements
- 2004** Spin-off and rebranding as Design Composite GmbH – strong international growth
- 2008** Global distribution (30 countries) – focus on Europe, North America, Middle East, and Australia
- 2011** Construction of company headquarters in Niedernsill
- 2015** Market launch of „translucent Acoustics“ and „Ultra Lightweight Panels“
- 2021** Production digitalization initiative
- 2022** Ecological commitment to sustainable lightweight solutions
- 2023** Market launch of translucent stone and purely thermoplastic lightweight elements with efficient reuse of materials and resources

2024

25th company anniversary!

Pioneering for ecologically more sustainable lightweight solutions.

Business Units

Translucent Architecture/Acoustics:

We shape the architecture of the future. Design elements shine in the interplay of light and shadow, setting new standards in acoustic design.

Lightweight Construction:

Our panels represent the future of lightweight construction – exceptionally light, stable, and individual.

The quintessence of versatility

for commercial vehicle elements, caravan, industry, and architecture.

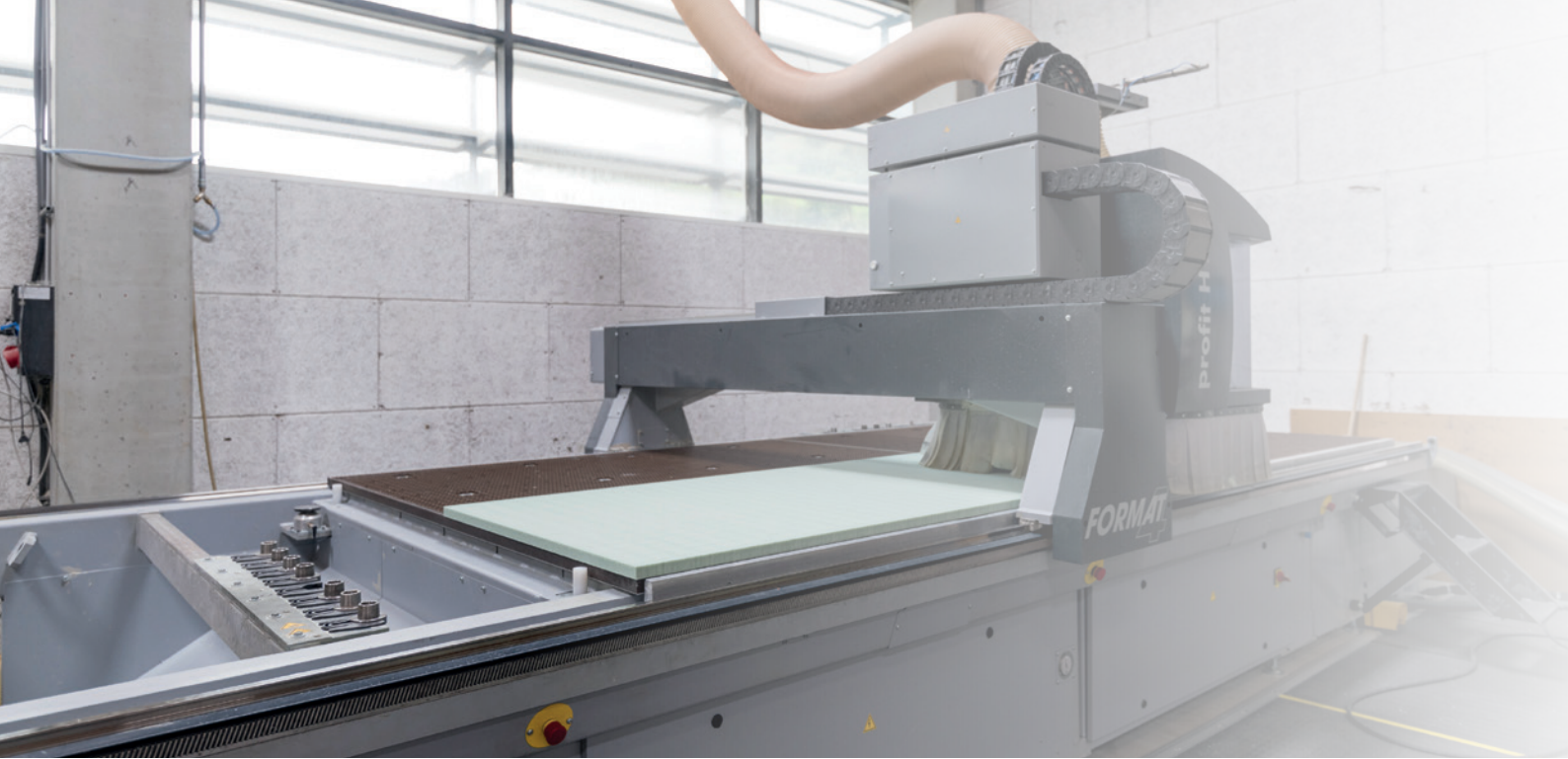
Our company excels in combining various high-tech materials into innovative sandwich elements. The range includes highly stable lightweight panels and translucent design panels. Flexibility and individuality are key features. From extreme lightness to maximum stability and a unique look – each panel is a masterpiece.

Environmentally friendly, hand in hand.

We are pioneers in terms of environmental friendliness and sustainability. Our partnerships are characterized by integrity and quality. Celebrate with us 25 years of innovation and stay tuned for the revolutions that the future holds.

ISO 9001 Certification





Your vision, our technologies / machinery

Whether it's about combining different materials or creating a new product, our machines are the tools to turn your vision into reality.

Full-Service Provider

Our philosophy is evident in every aspect of our work. As a full-service company, we not only provide top-notch technologies but also offer the capability to implement projects from small to large-scale production.

design composite takes pride in its innovative technologies that shape our products with precision and care, from the initialisation to completion.

Tricore Plant / Core Manufacturing



CNC Processing



We proudly present a broad
range of innovative production
technologies:

From concept to reality – Everything in One Place

Vacuum press: Our vacuum and multi-level presses serve as the starting point for the harmonious bonding of complex materials into a composite product. Precise, efficient, and ready for installation.

Tricore Plant: This is the place where design visions come to life. Utilizing unique stretching technology, we produce honey-comb-shaped core materials from transparent thermoplastics.

Lamination Plant: Our online lamination plant is the heart of production, not only bringing our products together but also ensuring their exceptional robustness and durability. Here, raw materials are bonded through a hot-melt processes to create sandwich structures or fused into a homogeneous composite.

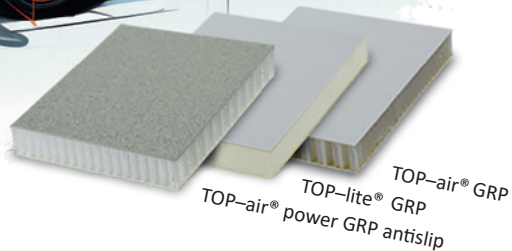
CNC Processing: Precision down to the smallest detail. Our service centre imparts our products with their characteristic form and ensures the production of accurately tailored elements.

Vacuum Press



Lamination Plant





Industry

We design your composite!

Our panels are used where low weight combined with stiffness is crucial. Typical applications include truck bodies and caravans. You can also find our products in turbine housings for wind power plants or as formwork in the concrete industry.



Our panels are specifically developed for your application. Together, we find the optimal combination of surface layers and core. In production, we integrate inserts (such as cable ducts and rails) and cut the panels to your needs. CNC-controlled, we supplement cutouts for features like windows and doors.

Two core types Foam or honeycomb

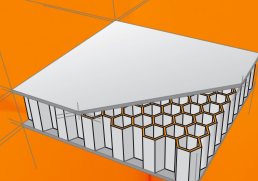
TOP-lite®

The combination of a rigid foam core with glass fibre-reinforced polyester surface layers, complemented by a gel coat surface that eliminates the need for subsequent painting, results in an extremely lightweight sandwich composite with excellent mechanical and insulating properties.



TOP-air®

A PP honeycomb core with glass fibre-reinforced polyester surface layers yields a sandwich composite with excellent mechanical properties.



Architecture

We design your composite!

Our panels for architecture are suitable for both interior and exterior applications. The translucent components significantly expand creative design possibilities. In addition to visual enhancement our acoustic panels play a sound absorbing role in many projects.

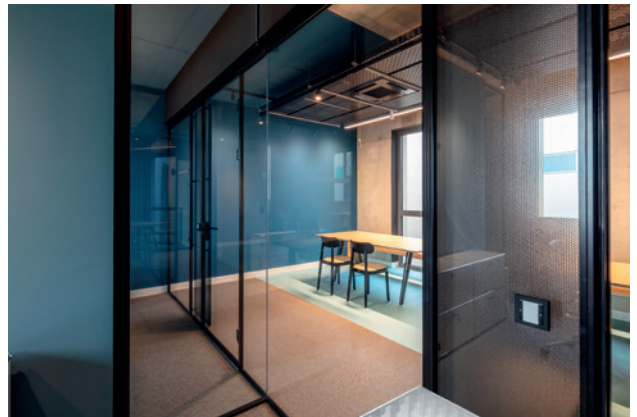
Panels from design composite are easy to work with. They can also be supplied in curved forms. Additionally, we provide a variety of accessories for installation. Interested in realizing a project with us? Feel free to talk to us – we are happy to provide advice.

Thanks to a multitude of combinations - from the surface layers: transparent, coloured, clear, or satin-finished - to various core forms, the appearance is diverse. The option to produce the panel as an acoustic panel with sound-absorbing properties or as a Quiet variant with sound-insulating features makes the product highly intriguing in interior design.

The new AIR-board® stone light line offers the possibility to combine lightweight panels with real stone. When the panel is backlit a truly unique and novel appearance is created.



clear-PEP®



AIR-board®



AIR-board® stone light



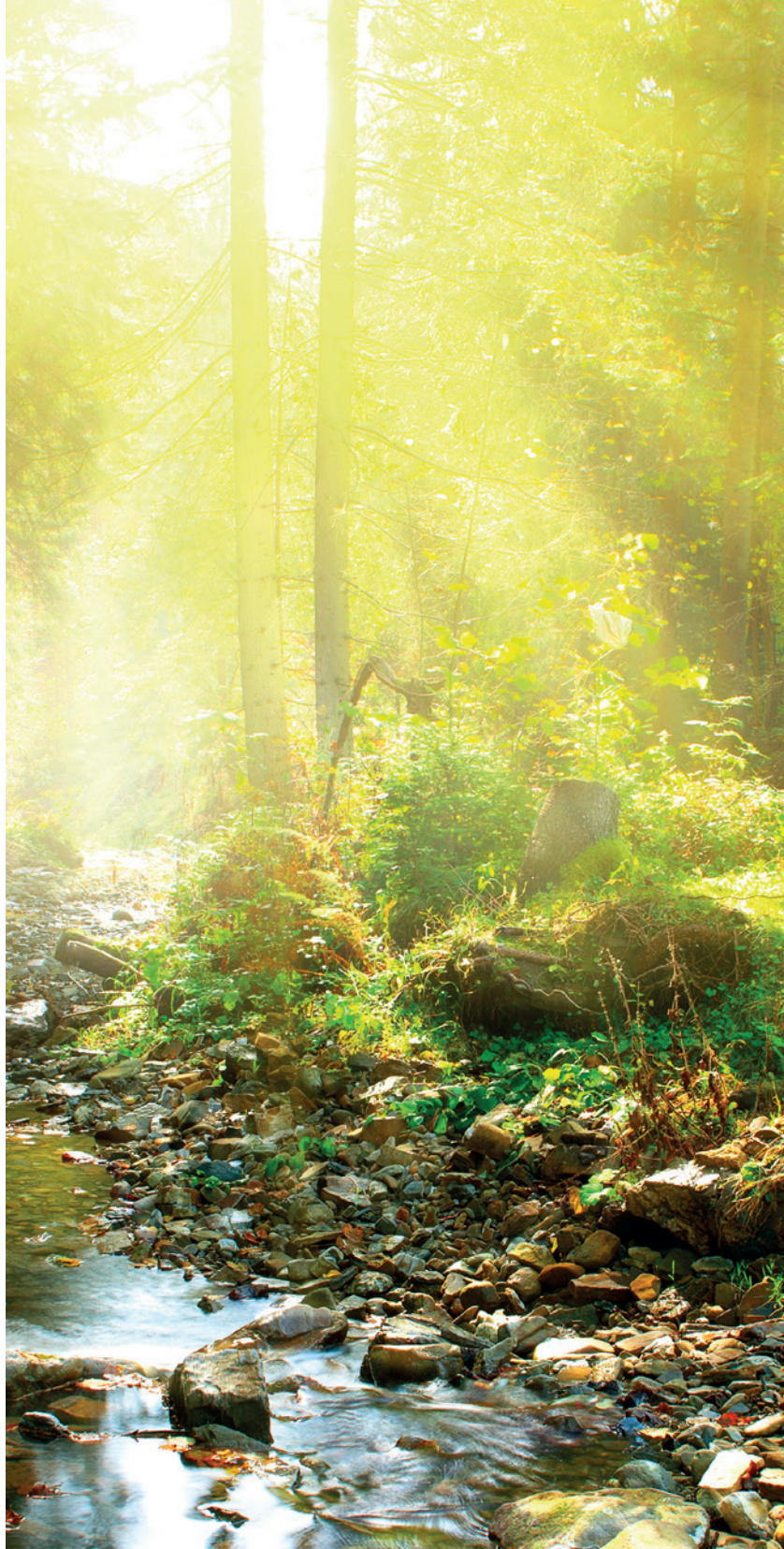
Green Facts

Embedded in the breathtaking nature of the Hohe Tauern National Park, we take responsibility for our planet. Our production facility in the Salzburg Pinzgau was constructed according to ecological principles, leading to a significant CO₂ savings of 140 tons annually.

Our facility utilizes natural energy sources for heating and hot water, and we source 100% of our electricity from renewable energy sources. Additionally, we embrace electromobility, LED technology and will soon have additional PV panels on the factory premises.

A Glimpse into the Future

We are not only pioneers in the composite panel industry but also leaders in sustainability. Our vision extends further. We are always open to new technologies and innovations that help us make our products even more sustainable, efficient, and environmentally friendly.



are
We pioneers



MAGON
High-Performance-Tools

more cutting one partner

- ✓ Für jedes Material das passende Werkzeug!
- ✓ Sonderanfertigungen innerhalb 1-2 Wochen!
- ✓ Wir liefern auch MKD-Werkzeuge für Spiegelfinish!
- ✓ 95% auf Lager!

www.magon-tools.de

Service-Hotline

+49 (0) 8341-9711340

Mo-Fr: 08:00 - 17:00 Uhr

www.magon-tools.de



A promise for tomorrow: Our Responsibility

The heart of our company is built on values, visions, technologies, and our employees who shape the way we work. We are ready to think innovatively and actively act for a more sustainable future.

We create an environment where our employees feel comfortable and valued. With enthusiasm, we work together to meet our commitment to innovation and quality.



LAMILUX COMPOSITES HIGH-TECH-WERKSTOFFE FÜR DIE MÄRKTE DER ZUKUNFT



LAMILUX ist der europaweit führende Hersteller faserverstärkter Kunststoffe. Die hohe Qualität der Composites aus Glas- und Carbonfasern ist unerreich – dank eines einzigartigen, kontinuierlichen Produktionsverfahrens.


Nutzfahrzeug
Industrie


Caravan
Industrie


Bus
Industrie


Bau
Industrie


Sport
Industrie

LAMILUX COMPOSITES GMBH | Zehstraße 2 | 95111 Rehau | Tel +49 (0) 92 83 / 5 95-0 | Fax +49 (0) 92 83 / 5 95-290 | E-Mail: composites@lamilux.de | www.LAMILUX.de



**IHR SPEZIALIST FÜR
METALLVERARBEITUNG**

- » **Fräsen**
- » **Biegen**
- » **Einpressen**
- » **Stanzen**
- » **Schweißen**
- » **Baugruppenfertigung**

Peschke & Kainz Gerätebau GmbH überzeugt seit 1983 mit einem innovativen Maschinenpark, modernsten Technologien, einer ökonomischen Fertigung und einem transparentem Qualitäts- und Prozessmanagement.

We want to say THANK YOU!

We would like to thank our partners for the many years of trustful cooperation and look forward to the future together!



Aigner Werkzeuge GmbH
Widldorf 25
A-4715 Taufkirchen/Tr.
T +43 7733 7583
office@aigner-werkzeuge.at
www.aigner-werkzeuge.at

**Maschinen für
die Bearbeitung
von Massivholz,
Plattenmaterial,
Kunststoffen und
Aluminium.**

FELDER FORMAT & Hammer MAYER

FELDER GROUP ÖSTERREICH
JETZT INFORMIEREN: 05223 5850-0



**Innovative Kerne für
extrem leichte und hochfeste
Leichtbauprodukte**

Produktion von Kunststoffwaben
auf Basis von Polypropylen.

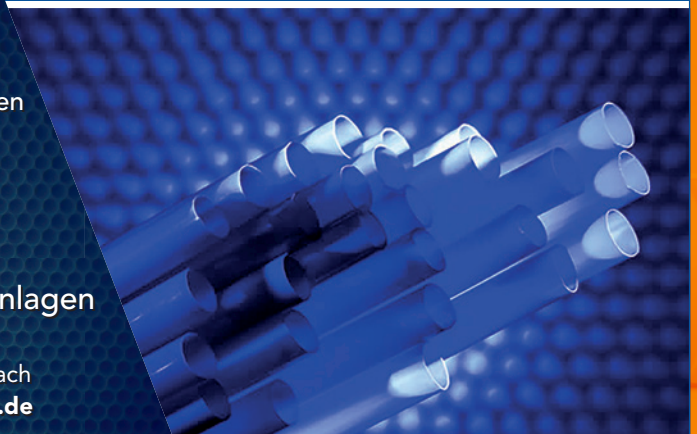
Unsere Erzeugnisse sind Halbzeuge und werden als
Kerne zur Herstellung von Sandwichverbundkonstruktionen
im Leichtbau eingesetzt.

Nutzfahrzeugbau	Automotive
Boots- und Schiffsbau	Transport / Logistik
Schienenfahrzeugbau	Bauwesen Windkraftanlagen

Industrie- und Gewerbegebiet 11 · 07426 Königsee OT Rottenbach
T +49 36739 318-0 · info@tubus-waben.de · www.tubus-waben.de

TUBUS WABEN

Qualitätsprodukte
Made in Germany.



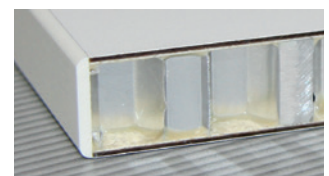
Competence **PUR**

Der Spezialist unter den Klebstoffherstellern

Herzlichen Glückwunsch
zum **25-jährigen** Jubiläum!

www.kleiberit.com

KLEIBERIT®
ADHESIVES • COATINGS

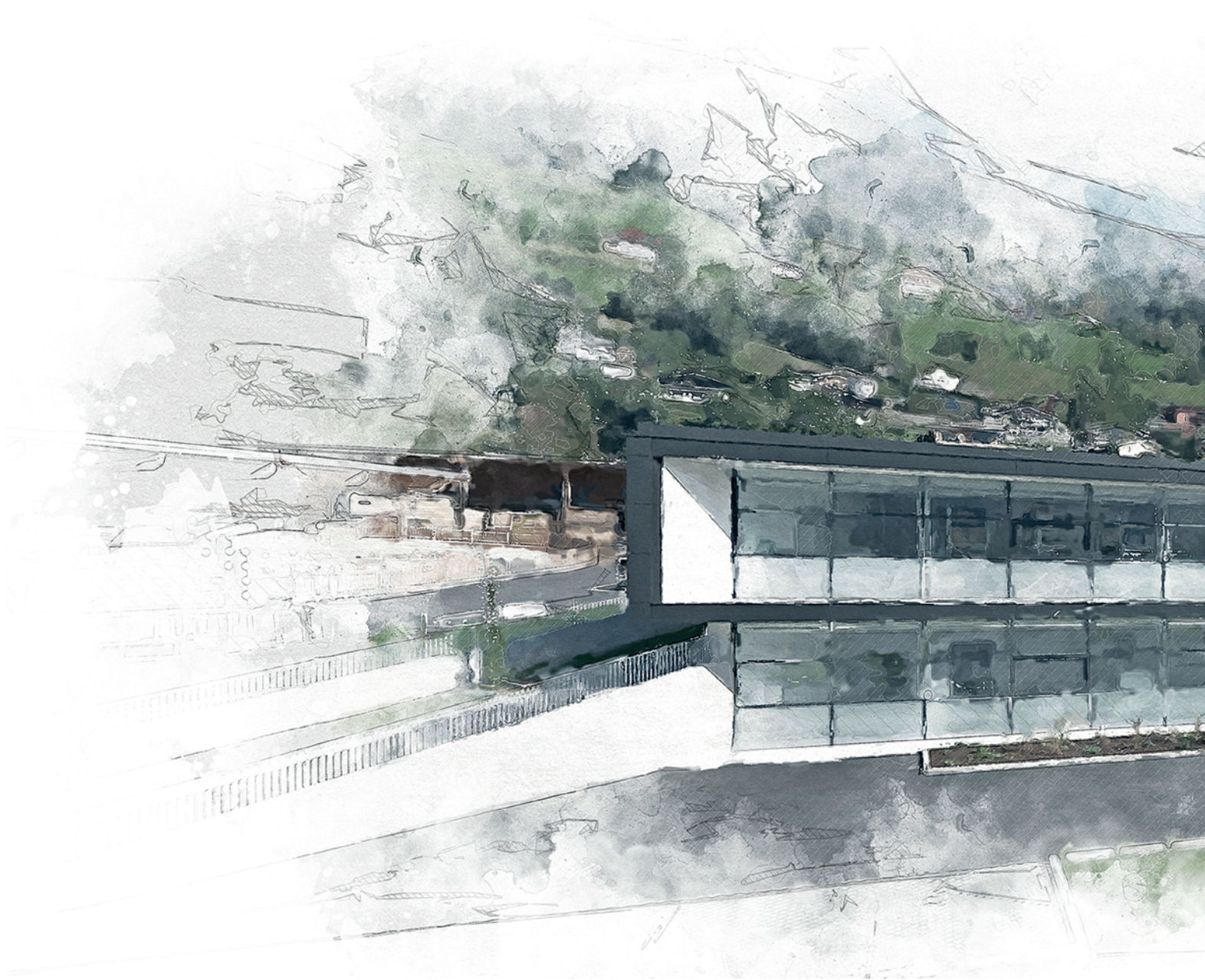


arla
www.arlaplast.com



Massivplatten aus
Polycarbonat, ABS und PETG
Stegplatten aus Polycarbonat

PLASTIC SHEETS FOR YOUR NEEDS!



DESIGN COMPOSITE GMBH

Gewerbegebiet Lengdorf 4 | 5722 Niedernsill | AUSTRIA
Tel.: +43 (0)6548 20 39 70 | Fax: +43(0)6548 20 39 797
info@design-composite.com | www.design-composite.com



**ECO
FRIENDLY**